

ROMA VINYL *Collection*

Our Italian Vinyl Flooring Collection is a distressed engineered floor packaged with three different widths for a unique layout, and is used in many areas such as homes, offices, shops, healthcare, gyms and hotels.

Colors are rich and bold and the distressed texture complements the natural grain pattern of wood.

With a highly accurate and stunning wood-effect texture, the luxury vinyl tiles are simply beautiful.

The beauty of vintage oak is wonderfully recreated with numerous color variations. Measuring 5mm x 183mm x 1219mm, these luxury vinyl tiles will recreate the rustic beauty of a solid floor into your home, at a fraction of the price.



RVC 21



RVC 25



RVC 07



RVC 17



RVC 22



RVC 02



RVC 24



RVC 26



RVC 27



RVC 06



RVC 01



RVC 18

ROMA VINYL *Collection*



Supports Overlay
No more hacking.



Waterproof
Suitable for use in high moisture areas such as kitchen



Slip Resistance
Its wear layer is treated to prevent accidents and falls



Safe for Kids
Low formaldehyde emission makes it safe for children



Safe for Pets
Safe for all pets to roll and roam freely



Termite Free
No wood content used in the manufacturing



Sun/ UV Resistance
No discoloration due to sun or ultraviolet rays



Thick Wear Layer
Commercial grade wear layer for added durability



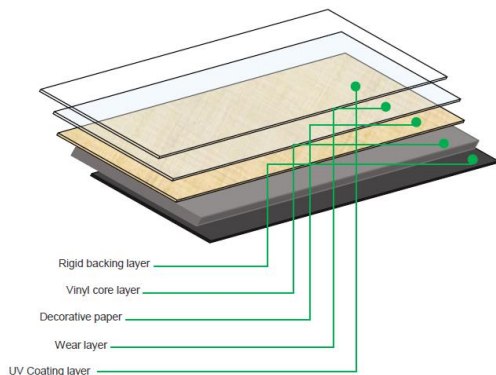
Fire Resistance
Is not flammable and is a poor conductor of heat



Warranty
Both residential and commercial warranty included

SPECIFICATIONS & TEST CONDUCTS

Dimension	5mm x 183mm x 1219mm
Wear-layer	0.5mm
Quantity	1.78m ² /19.16 per sq ft per carton (8 pieces)
Weight	18kg per carton (8 pieces)
Product Density	1.78m ² /19.16 per sq ft per carton (8 pieces)
Material	Virgin Vinyl
Product Stabilizer	Fibreglass Netting
Squareness	SS485 : 2011 Tested in Singapore Lab (TUV)
Heat Test	BSENISO 9239 1:2010 Tested in Singapore Lab (TUV)
Straightness/Squareness	EN427/428/429/430 Tested in Singapore Lab (TUV)
Toxicity	BS6853 Tested in Singapore Lab (TUV)
Smoke Production	EN13501-1 Tested in Singapore Lab (TUV)
Fire-Resistant	BSEN135011-1 : 2007 + A1 : 2009 Tested in Singapore Lab (TUV)
Slip-Resistant	SS485 : 2011 Tested in Singapore Lab (TUV)
Color Fastness	ENISO 105-B02 Tested in Singapore Lab (TUV)
Stain & Chemical Resistance	EN423 : ENISO26987 Tested in Singapore Lab (TUV)
Residual Indentation	EN433 Tested in Singapore Lab (TUV)
Flexibility	EN435 Tested in Singapore Lab (TUV)
Curling	EN434 Tested in Singapore Lab (TUV)
Wear-Resistant	EN660 Tested in Singapore Lab (TUV)
Formaldehyde Content	EN717-E1 Tested in Singapore Lab (TUV)
Cigarette Butt Test	EN1399 Tested in Singapore Lab (TUV)
Castor Chair Test	BSEN425 : 2002 Tested in Singapore Lab (TUV)



Model: RVC01



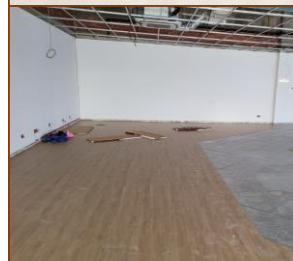
Model: RVC02



Model: RVC06



Model: RVC07



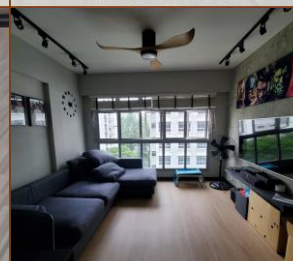
Model: RVC17



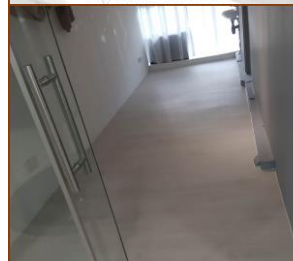
Model: RVC18



Model: RVC21



Model: RVC22



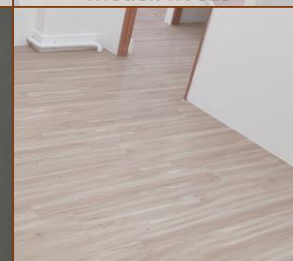
Model: RVC24



Model: RVC25



Model: RVC26



Model: RVC27

***Colour might differ due to lighting on site!**