

# Milano VINYL *Collection*

Our Italian Vinyl Flooring Collection is a distressed engineered floor packaged with three different widths for a unique layout, and is used in many areas such as homes, offices, shops, healthcare, gyms and hotels.

Colors are rich and bold and the distressed texture complements the natural grain pattern of wood.

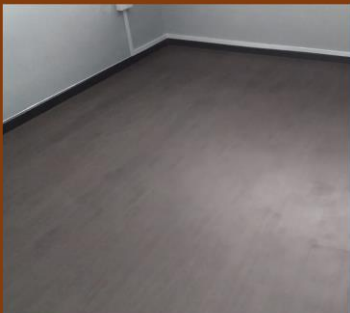
With a highly accurate and stunning wood-effect texture, the luxury vinyl tiles are simply beautiful.

The beauty of vintage oak is wonderfully recreated with numerous color variations.

Measuring 4.2mm x 183mm x 1219mm, these luxury vinyl tiles will recreate the rustic beauty of a solid floor into your home, at a fraction of the price.



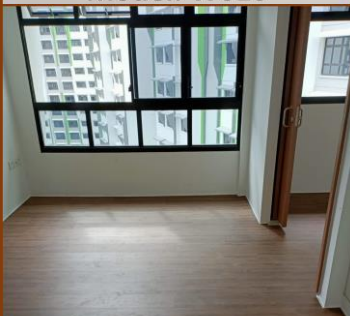
# Milano VINYL Collection



Model: W610



Model: W611



Model: W612



Model: W613



Model: W615



Model: W616



Model: W617



Model: W618



Model: W619



Model: W620



**Supports Overlay**  
No more hacking.



**Water Resistance**



**Slip Resistance**

Its wear layer is treated to prevent accidents and falls



**Safe for Kids**

Low formaldehyde emission makes it safe for children



**Safe for Pets**

Safe for all pets to roll and roam freely



**Termite Free**

No wood content used in the manufacturing



**Sun/ UV Resistance**

No discoloration due to sun or ultraviolet rays



**Thick Wear Layer**

Commercial grade wear layer for added durability



**Fire Resistance**

Is not flammable and is a poor conductor of heat

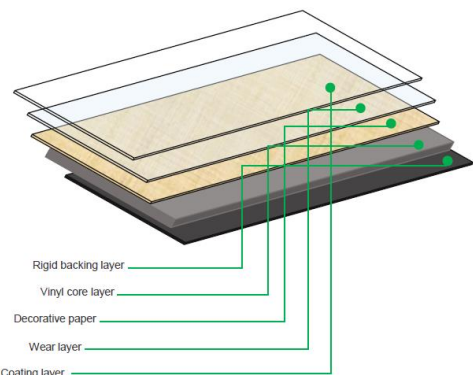


**Warranty**

Both residential and commercial warranty included

## SPECIFICATIONS & TEST CONDUCTS

Dimension	4.2mmx 183mm x 1219mm
Wear-layer	0.3mm
Quantity	1.78m <sup>2</sup> /19.16 per sq ft per carton (8 pieces)
Weight	18kg per carton (8 pieces)
Product Density	1.78m <sup>2</sup> /19.16 per sq ft per carton (8 pieces)
Material	Virgin Vinyl
Product Stabilizer	Fibreglass Netting
Squareness	SS485 : 2011 Tested in Singapore Lab (TUV)
Heat Test	BSENISO 9239 1:2010 Tested in Singapore Lab (TUV)
Straightness/Squareness	EN427/428/429/430 Tested in Singapore Lab (TUV)
Toxicity	BS6853 Tested in Singapore Lab (TUV)
Smoke Production	EN13501-1 Tested in Singapore Lab (TUV)
Fire-Resistant	BSEN135011-1 : 2007 + A1 : 2009 Tested in Singapore Lab (TUV)
Slip-Resistant	SS485 : 2011 Tested in Singapore Lab (TUV)
Color Fastness	ENISO 105-B02 Tested in Singapore Lab (TUV)
Stain & Chemical Resistance	EN423 : ENISO26987 Tested in Singapore Lab (TUV)
Residual Indentation	EN433 Tested in Singapore Lab (TUV)
Flexibility	EN435 Tested in Singapore Lab (TUV)
Curling	EN434 Tested in Singapore Lab (TUV)
Wear-Resistant	EN660 Tested in Singapore Lab (TUV)
Formaldehyde Content	EN717-E1 Tested in Singapore Lab (TUV)
Cigarette Butt Test	EN1399 Tested in Singapore Lab (TUV)
Castor Chair Test	BSEN425 : 2002 Tested in Singapore Lab (TUV)



\*Colour might differ due to lighting on site!